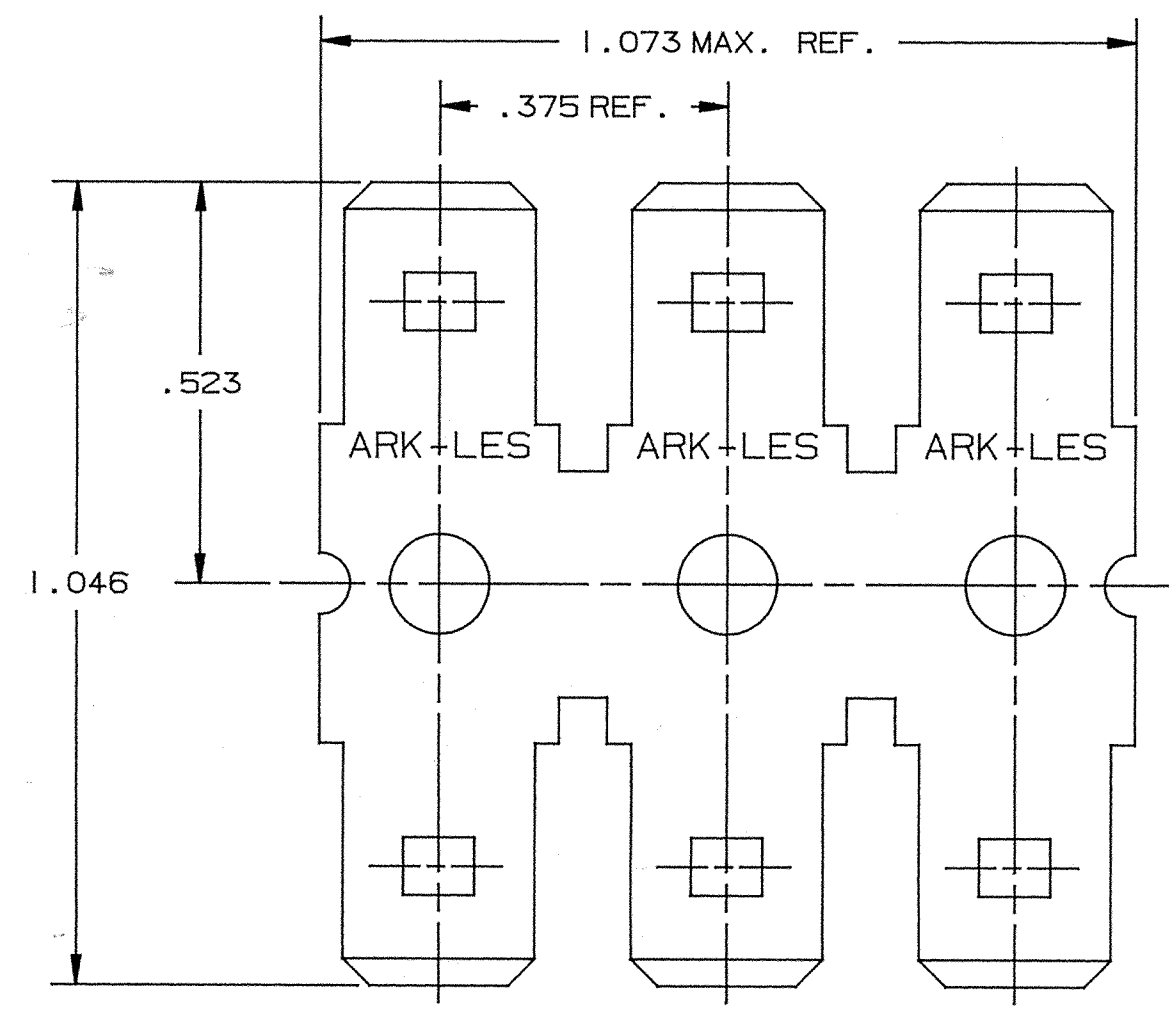
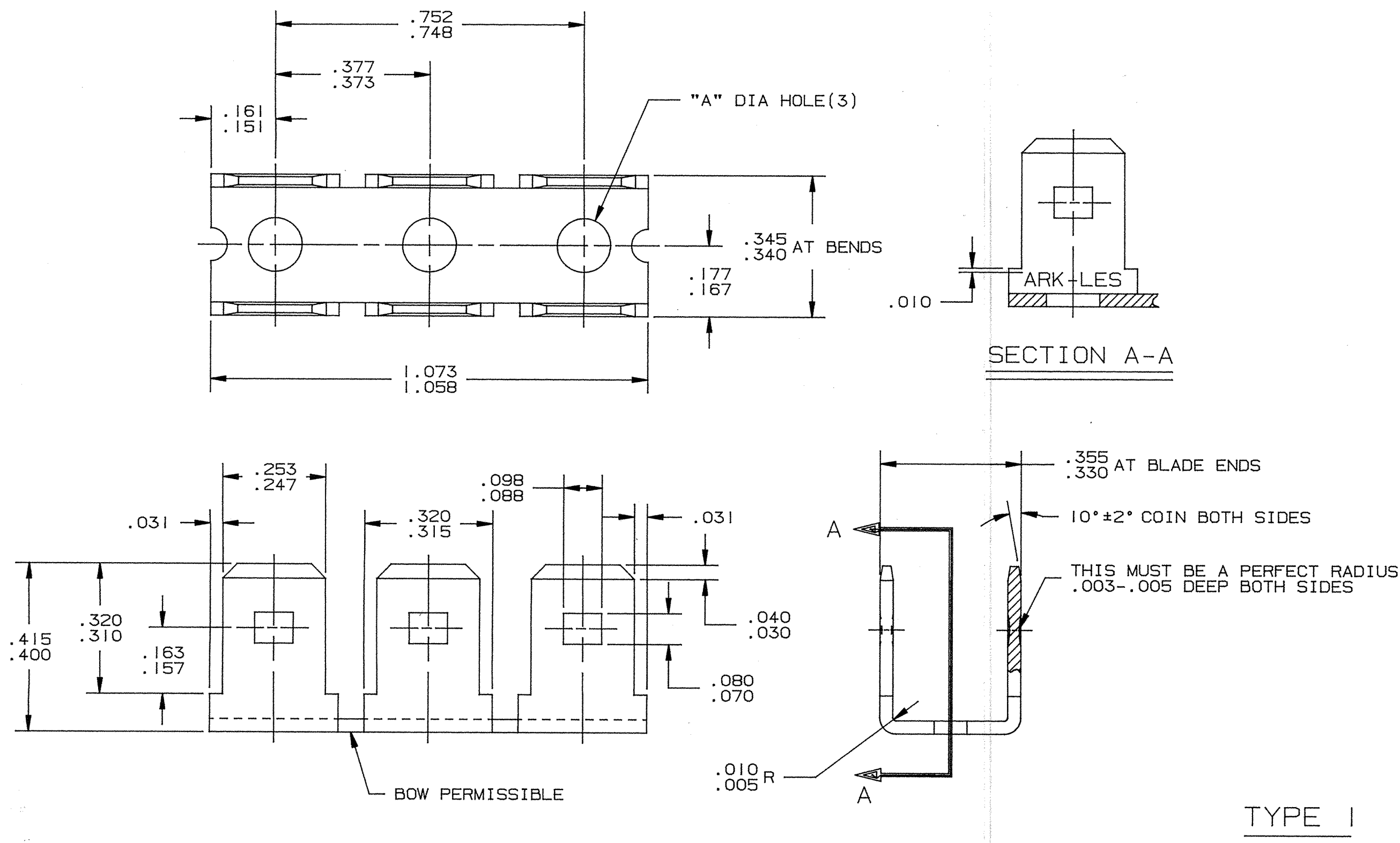


DEPT	1
1	1
2	
3	
4	1
5	
6	
7	
8	
9	
10	
11	
12	6
NC	4
JZ	3

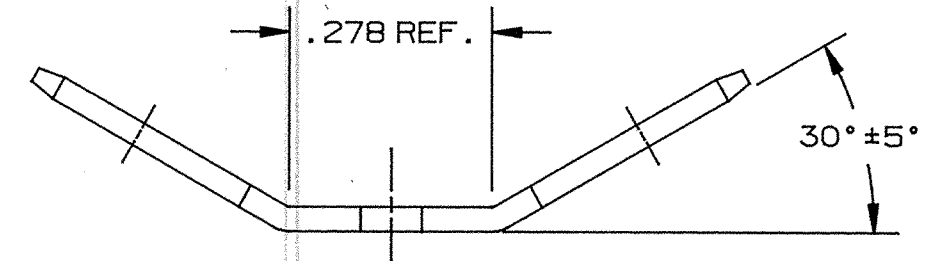
PART NAME: TERMINAL - MALE 6-WAY

PART NO: 3000C29-2/



TYPE 2

SAME AS TYPE 1 EXCEPT AS SHOWN



TYPE 3

SAME AS TYPE 1 EXCEPT AS SHOWN

PART NUMBER	TYPE	"A" DIA HOLE	FINISH
3000C29-2	1	.132/.128	NONE
3000C29-2B	1	.132/.128	SILVER PLATE PCS1006
3000C29-2J	1	.132/.128	TIN PLATE PCS1002
3000C29-2J1	1	.148/.132	TIN PLATE PCS1002
3000C29-2R	2	.132/.128	NONE
3000C29-2-30	3	.132/.128	NONE
3000C29-2-30A	3	.132/.128	TIN PLATE PCS1002

- NOTES:
1. ALL PORTIONS OF THE TAB SHOWN SHALL BE FLAT AND FREE FROM BURRS OR RAISED PLATEAUS, EXCEPT THAT THERE MAY BE, IN AN AREA .050 INCH SURROUNDING THE DETENT, A RAISED PLATEAU OVER THE STOCK THICKNESS OF .001 INCH PER SIDE.
 2. DETENT SHALL BE LOCATED WITHIN .005 OF THE CENTERLINE OF THE TAB.
 3. ARK-LES TO BE DIE STAMPED AS SHOWN.

ARK-LES UNCONTROLLED

PROD. REL.	ECR8901	1-29-92	R.T.	TOLERANCES UNLESS OTHERWISE SPECIFIED:
QUOTE REL.				DECIMALS ±.010 METRIC ±0.25mm ANGLES ±1°
DR:	M. BUMILA	1-28-92		MATERIAL: .032 ±.001 THICK BRASS
CHK'D:	R.W.T.	1-28-92		C25000, 1/2 HARD
APP:	BST	1-29-92		R30T 56.5-68.0
REV. 6	REVISED & REDRAWN PER ECR #8901	1-28-92	M.B.	FINISH: SEE TABLE
REV.	DESCRIPTION	DATE	DR.	PART NO: 3000C29-2/
				SCALE: 4X CAD NO: CTM0003

ORIGINAL