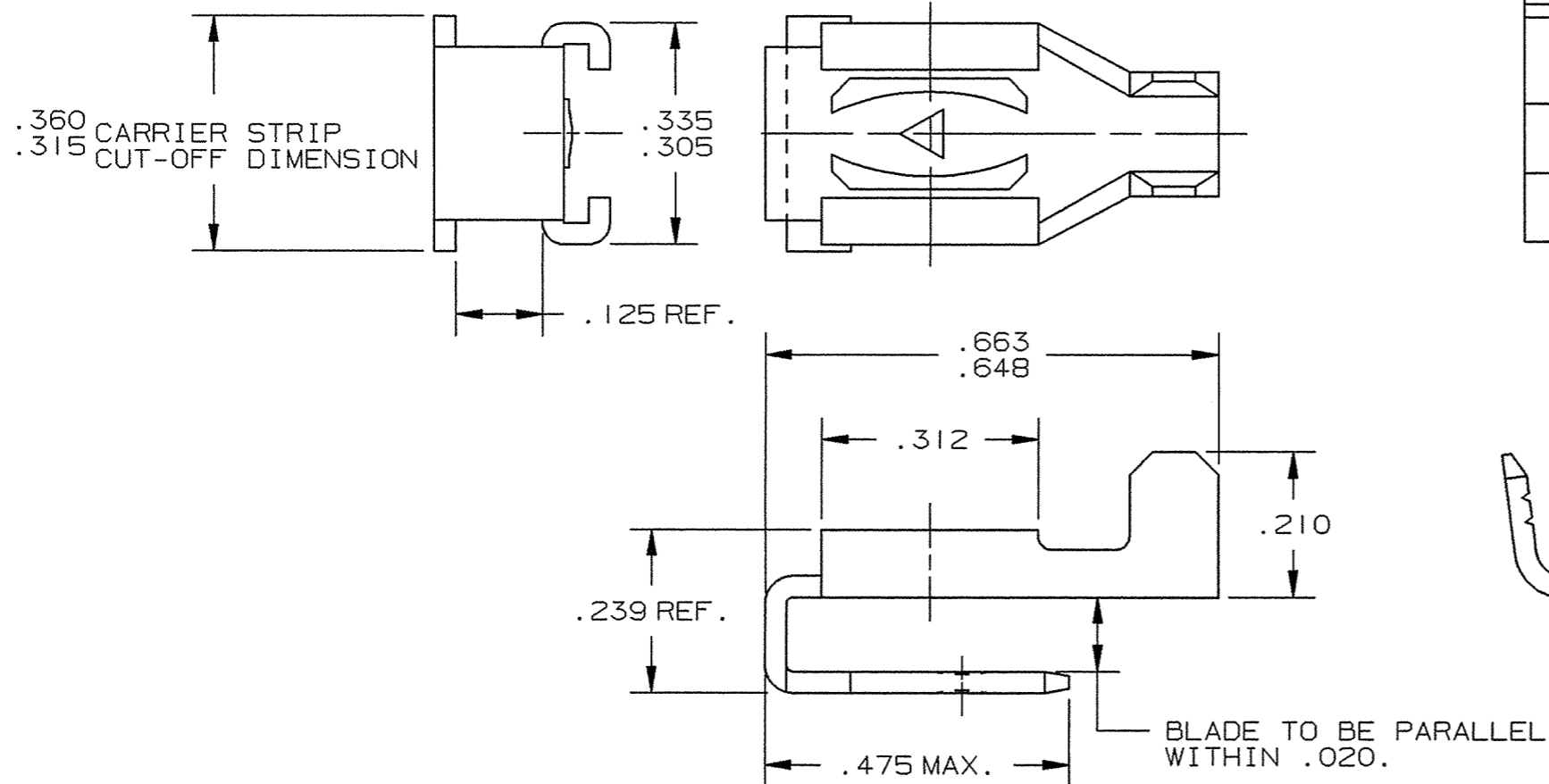


DEPT	
1	1
2	
3	
4	2
5	
6	
7	
8	
9	
10	
11	
12	
NC	
JZ	

PART NAME: FEMALE & MALE TERMINAL

PART NO: 3000H 21A/-2

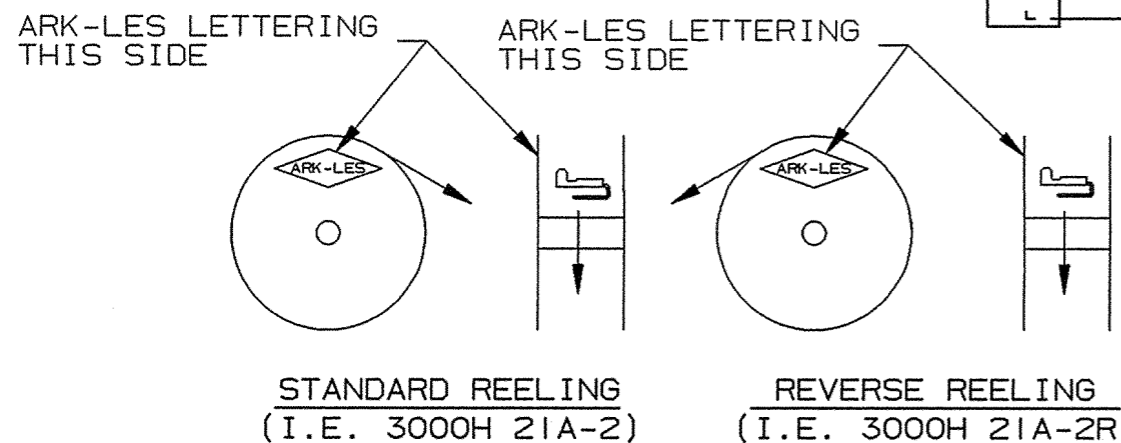
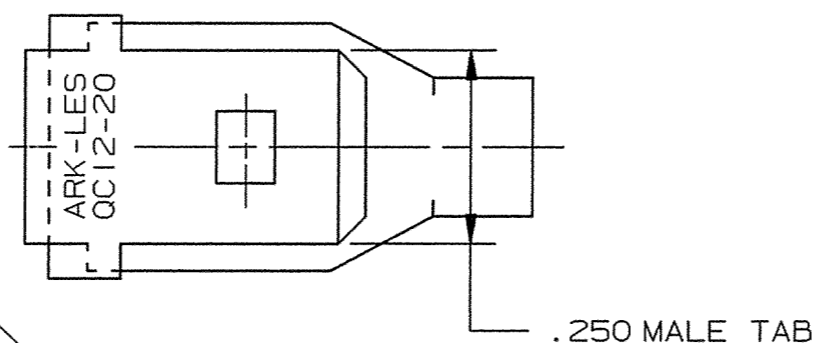
PART NUMBER	MATERIAL	FINISH	Q.C. STAMP
3000H 21A-2	.032 ±.001 THICK BRASS	PRETINNED	YES
3000H 21AB-2	.032 ±.001 THICK BRASS	NONE	YES
3000H 21AC-2	.032 ±.001 THICK BRASS	SILVER PLATE	YES



NOTES:

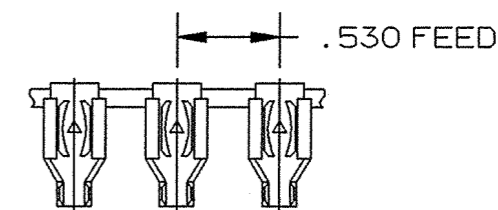
- TO ACCEPT A .250 X .032 MALE TAB.
- TO ACCOMMODATE #12-#20 GAUGE WIRE.
- RECOMMENDED STRIP LENGTH: 3/16 ± 1/32.
- FOR PARTS LESS DIMPLE ADD SUFFIX "-3" TO PART NUMBER. (i.e. 3000H 21A-2-3)
- FOR REVERSE REELING ADD SUFFIX "R" TO PART NUMBER AS SHOWN.
- FOR LOOSE PIECE PARTS ADD SUFFIX "-1" TO PART NUMBER (i.e. 3000H 21A-2-1).
- INSERTION/WITHDRAWAL FORCES TO BE AS FOLLOWS WHEN USING MALE TEST TAB 3000M 68H-1:

1ST INSERTION:	15.0 LBS MAX.	
	6.0 LBS MIN.	(GU)
1ST WITHDRAWAL:	17.0 LBS MAX.	
	6.0 LBS MIN.	AVERAGE
6TH WITHDRAWAL:	5.0 LBS MIN.	AVERAGE
	4.0 LBS MIN.	INDIVIDUAL



REELING DIAGRAMS

ARK-LES
UNCONTROLLED



FABRICATED TERMINAL STRIP

SCALE: FULL

			PROD. REL.	49457	7/5/60	HK	TOLERANCES UNLESS OTHERWISE SPECIFIED:	
			QUOTE REL.	40906	3/25/60	BA	DECIMALS ±.010	METRIC ±0.25mm
			DR:	R. TASTULA 9/22/00			ANGLES ±1°	
			CHK'D:	R.W.T. 6-5-02			MATERIAL: SEE TABLE	
GU	REVISED PER ECR #12298	5/31/02	RT	APP:	RTB 6-10-02		FINISH: SEE TABLE	
GT	REV. GT WAS AA PER ECR #12077	9/22/00	RT	SUPERCEDES DWG. DATED: 8/8/95		PART NO: 3000H 21A/-2		
REV.	DESCRIPTION	DATE	DR.	SCALE: 4:1	CAD NO: BT00048			

ORIGINAL IF RED