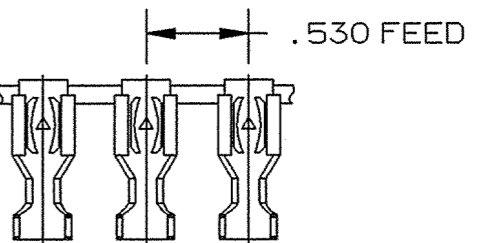
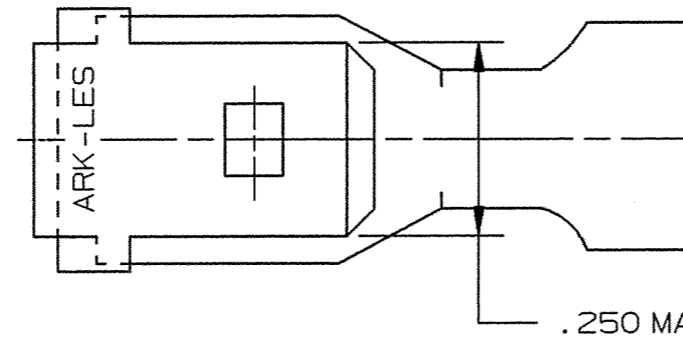
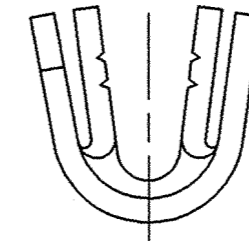
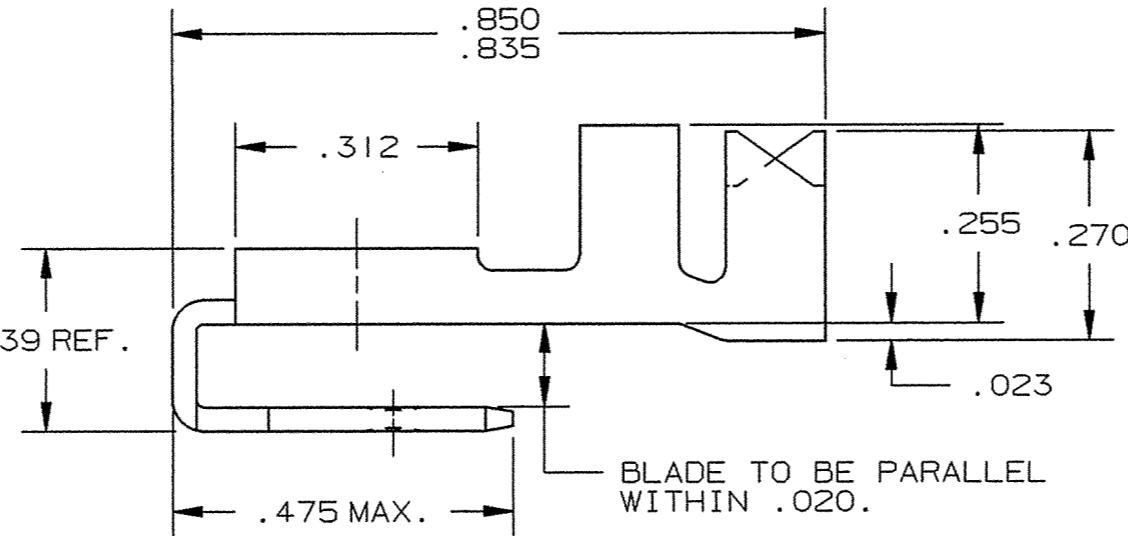
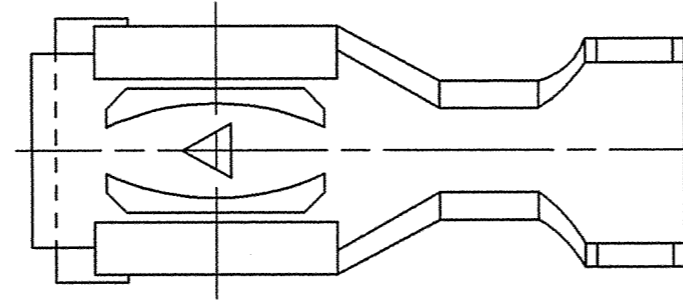
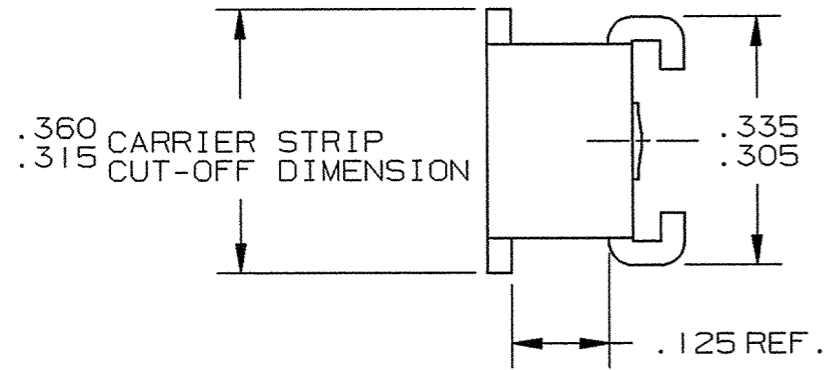


DEPT	
1	1
2	
3	
4	2
5	
6	
7	
8	
9	
10	
11	
12	
NC	
JZ	

PART NAME: FEMALE & MALE TERMINAL

PART NO: 3000H 21A/-7

PART NUMBER	MATERIAL	FINISH	Q.C. STAMP
3000H 21A-7	.032 ±.001 THICK BRASS	PRETINNED	NO
3000H 21AB-7	.032 ±.001 THICK BRASS	NONE	NO



FABRICATED TERMINAL STRIP

SCALE: FULL

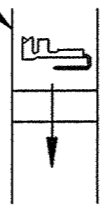
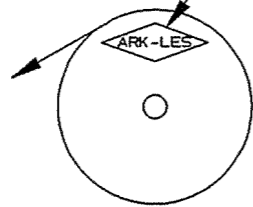
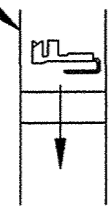
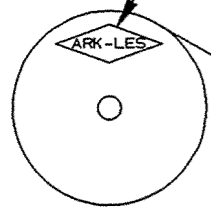
NOTES:

- TO ACCEPT A .250 X .032 MALE TAB.
- TO ACCOMMODATE #10-#12 GAUGE WIRE.
- INSULATION DIAMETER RANGE: .150-.210.
- RECOMMENDED STRIP LENGTH: 3/16 ± 1/32.
- FOR PARTS LESS DIMPLE ADD SUFFIX "-3" TO PART NUMBER. (i.e. 3000H 21A-7-3)
- FOR REVERSE REELING ADD SUFFIX "R" TO PART NUMBER AS SHOWN.
- FOR LOOSE PIECE PARTS ADD SUFFIX "-1" TO PART NUMBER (i.e. 3000H 21A-7-1).
- INSERTION/WITHDRAWAL FORCES TO BE AS FOLLOWS WHEN USING MALE TEST TAB 3000M 68H-1:

1ST INSERTION:	15.0 LBS MAX.	(GU)
	6.0 LBS MIN.	
1ST WITHDRAWAL:	17.0 LBS MAX.	AVERAGE
	6.0 LBS MIN.	
	4.0 LBS MIN.	INDIVIDUAL
6TH WITHDRAWAL:	5.0 LBS MIN.	
	4.0 LBS MIN.	INDIVIDUAL

ARK-LES LETTERING THIS SIDE

ARK-LES LETTERING THIS SIDE



STANDARD REELING
(I.E. 3000H 21A-7)

REVERSE REELING
(I.E. 3000H 21A-7R)

REELING DIAGRAMS

REV.	DESCRIPTION	DATE	DR.	SCALE: 4:1	CAD NO: BT00058	PART NO: 3000H 21A/-7
GU	REVISED PER ECR #12298	5/31/02	RT	APP: <i>RJT</i>	6-10-02	FINISH: SEE TABLE
GT	REV. GT WAS G PER ECR #12077	9/28/00	RT	SUPERCEDES DWG. DATED: 4/5/95		
				PROD. REL. JM 3150 2/18/93 RT	TOLERANCES UNLESS OTHERWISE SPECIFIED:	
				QUOTE REL.	DECIMALS ±.010 METRIC ±0.25mm ANGLES ±1°	
				DR: R. TASTULA 9/28/00	MATERIAL: SEE TABLE	
				CHK'D: R.W.T. 6-5-02		

ORIGINAL IF RED