

DEPT	
1	1
2	
3	
4	3
5	
6	
7	
8	
9	
10	
11	
12	
NC	
JZ	

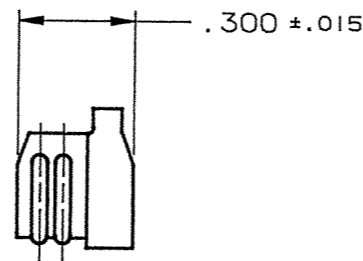
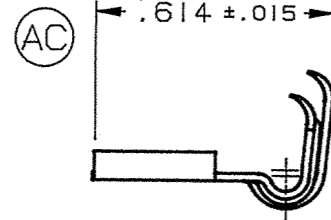
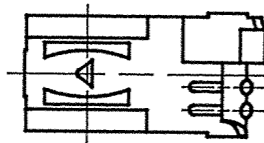
PART NAME:

TERMINAL-FEMALE

PART NO:

3000H45A/

PART NUMBER	MATERIAL	FINISH
3000H45A	.020±.001 THICK BRASS	PRETINNED
3000H45AB		NONE
3000H45AC		SILVER PLATE



NOTES:

- 1. TO ACCEPT A .250 .032 MALE TAB.
- 2. TO ACCOMMODATE #14 - #20 GAUGE WIRE.
- 3. INSULATION DIAMETER RANGE: .075 - .175.
- 4. RECOMMENDED STRIP LENGTH: 1/4 ±1/32.
- 5. INSERTION/WITHDRAWAL FORCES TO COMPLY WITH UL 310.
- 6. FOR LOOSE PIECE PARTS ADD SUFFIX "-1" TO PART NUMBER (i.e. 3000H45A-1).
- 7. FOR STANDARD REELING SEE FIGURE 1.
- 8. FOR REVERSE REELING ADD SUFFIX "R" TO PART NUMBER (i.e. 3000H45AR), SEE FIGURE 2.

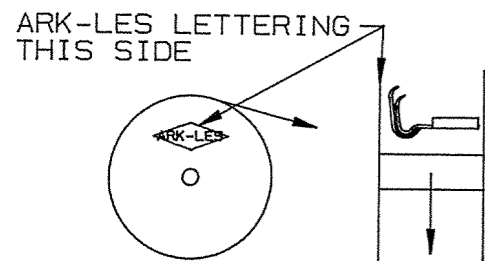
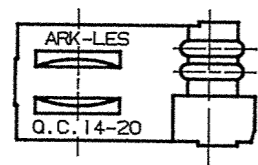


FIGURE 1
STANDARD REELING
(I.E. 3000H45A)

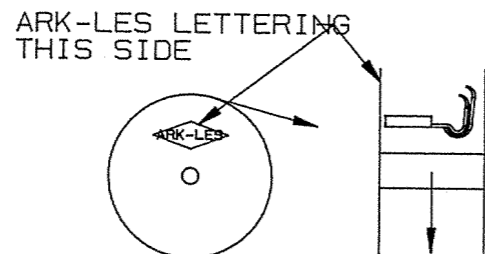
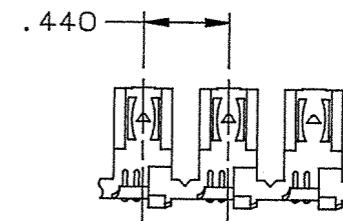


FIGURE 2
REVERSE REELING
(I.E. 3000H45AR)



ARK-LES
UNCONTROLLED

FABRICATED TERMINAL STRIP

SCALE 1=1

REV.	DESCRIPTION	DATE	DR.	SCALE: 2=1	CAD NO: BT00108	PART NO: 3000H45A/
AD	REVISED PER ECR #11078	10/10/96	BJC	APP: COR 10/22/96		
AC	REVISED & REDRAWN PER ECR #11058	8/30/96	BJC	SUPERCEDES DWG. DATED: 3/7/85		

ORIGINAL IF RED