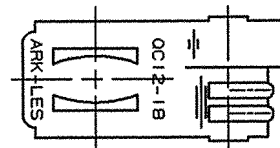
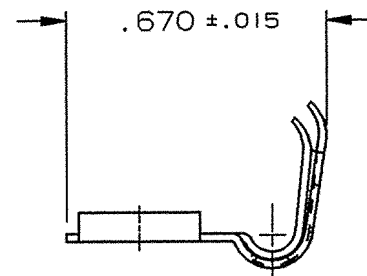
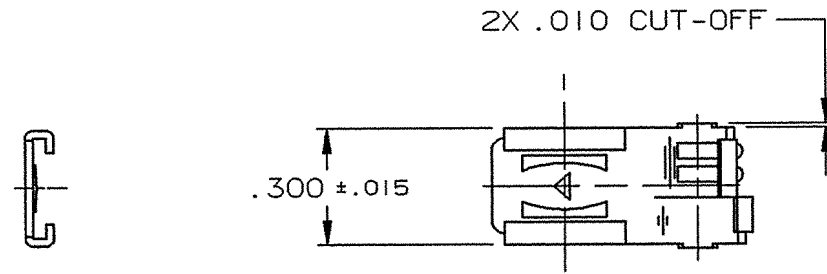


DEPT	
1	1
2	
3	
4	2
5	
6	
7	
8	
9	
10	
11	
12	
NC	
JZ	

PART NAME: FEMALE TERMINAL

PART NO: 3000H 68/

PART NUMBER	MATERIAL	FINISH	QC STAMP
3000H 68A	.020 ±.001 BRASS	PRETINNED	YES
3000H 68AB	.020 ±.001 BRASS	NONE	YES
3000H 68AC	.018 ±.001 C.R. STEEL	NICKEL PLATE	NO
3000H 68PA	.020 ±.001 PHOS. BRONZE	PRETINNED	NO
3000H 68PB	.020 ±.001 PHOS. BRONZE	NONE	NO
3000H 68PC	.020 ±.001 PHOS. BRONZE	SILVER PLATE	NO



- Ⓡ NOTES:
1. TO ACCEPT .250 X .032 MALE TAB.
 2. TO ACCOMMODATE #12-#18 GAUGE WIRE. INSULATION RANGE: .125-.210 DIA.
 3. RECOMMENDED STRIP LENGTH: 7/32 ±1/32.
 4. FOR STANDARD REELING SEE FIGURE 1.
 5. FOR LOOSE PIECE PARTS ADD SUFFIX "-1" TO PART NO. (I.E. 3000H 68A-1)
 6. FOR PARTS LESS DIMPLE ADD SUFFIX "-3" TO PART NO. (i.e. 3000H 68A-3)
 7. INSERTION/WITHDRAWAL FORCES TO COMPLY WITH UL 310.

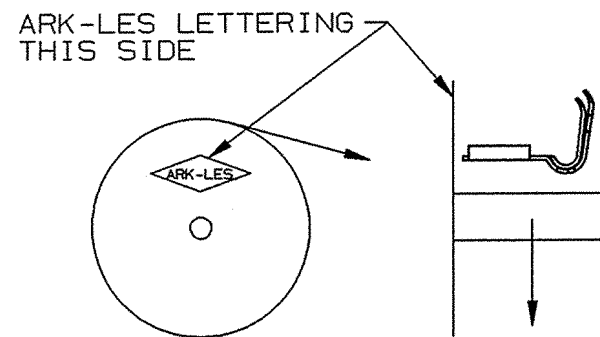
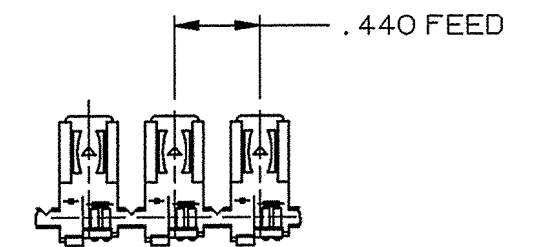


FIGURE 1
STANDARD REELING
(I.E. 3000H 68A)

ARK-LES
UNCONTROLLED



FABRICATED TERMINAL STRIP

SCALE: FULL

				PROD. REL.	ARK	3/22/89	RJ	TOLERANCES UNLESS OTHERWISE SPECIFIED:		
				QUOTE REL.	ARF	9/30/66	RJ	DECIMALS ±.010	METRIC ±0.25mm	ANGLES ±1°
				DR:	R. TASTULA	12/27/02		MATERIAL: SEE TABLE		
				CHK'D:	R.W.T.	1-3-03		FINISH: SEE TABLE		
				APP:	R.J.	1-14-03		PART NO: 3000H 68/		
R	REVISED PER ECR #12446	12/27/02	RT	SUPERCEDES DWG. DATED: 5/19/97						
REV.	DESCRIPTION	DATE	DR.	SCALE: 2:1	CAD NO: BT00124					

ORIGINAL IF RED