

DEPT	1
1	1
2	
3	
4	1
5	
6	
7	
8	
9	
10	
11	
12	
ME	

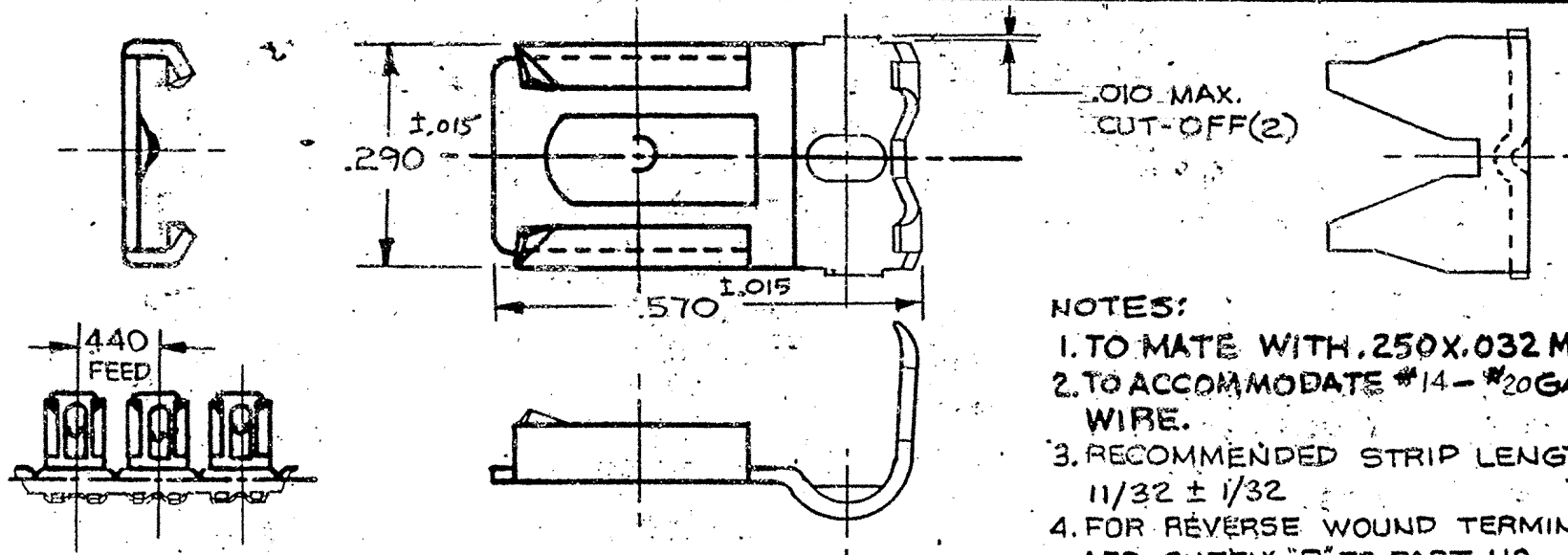
PART NAME: TERMINAL-FEMALE

PART NO: 3000H69/

# ARK-LES

## UNCONTROLLED

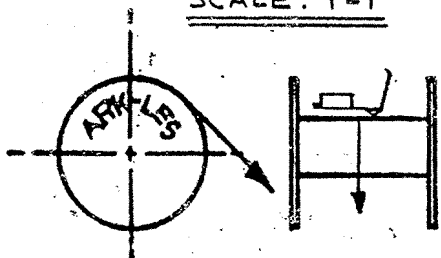
PART NO.	MATERIAL	FINISH
3000H69A	.016 THK. BRASS	PRETINNED
3000H69AB	.016 THK. BRASS	NONE
3000H69F	.016 THK. BRASS	SILVER PLT.



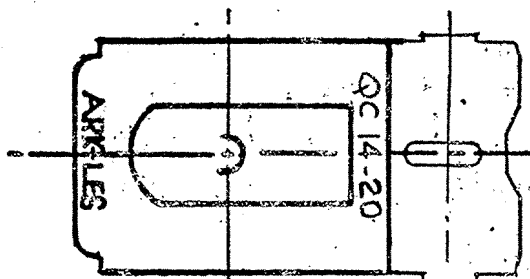
- NOTES:
1. TO MATE WITH .250X.032 MALE TAB
  2. TO ACCOMMODATE #14 - #20 GAUGE WIRE.
  3. RECOMMENDED STRIP LENGTH:  $11/32 \pm 1/32$
  4. FOR REVERSE WOUND TERMINALS ADD SUFFIX "R" TO PART NO.
  5. WIRE LEADS MAY BE ATTACHED IN A SPECIAL APPLICATOR WHICH FORMS ONE WIRE GRIP EAR TO PROVIDE AN INSULATION GRIP. THIS CAN ONLY BE USED ON WIRE WITH SMALL INSULATION DIAMETERS IN THE RANGE OF .040-.120 O.D. (#18-#20 GAUGE WIRE ONLY) RECOMMENDED STRIP LENGTH:  $3/16 \pm 1/32$ .
  6. FOR TERMINALS LOOSE PIECE ADD SUFFIX -1 TO PART NO.

FABRICATED TERMINAL STRIP

SCALE: 1=1



WINDING DIAGRAM



				PROD. REL: 23724	11-23-66	JJP	TOLERANCES UNLESS OTHERWISE SPECIFIED:
				QUOTE REL: 23724	11-23-66	JJP	DECIMALS ± .010 METRIC ± 0.25 mm ANGLES ± 1°
				DR.: P. PERROTTA	11-11-85		MATERIAL: SEE TABLE
				CHK'D.: R.W.T.	11-20-85		FINISH: SEE TABLE
				APP: B. S. H.	11-20-85		PART NO: 3000H69/
H	REVISED & REDRAWN	ECPS442	11-11-85	PJP	SUPERSEDES DWG. DATED: 8-29-68		
REV	DESCRIPTION		DATE	DR	SCALE: AX	F.M.F.	

ORIGINAL