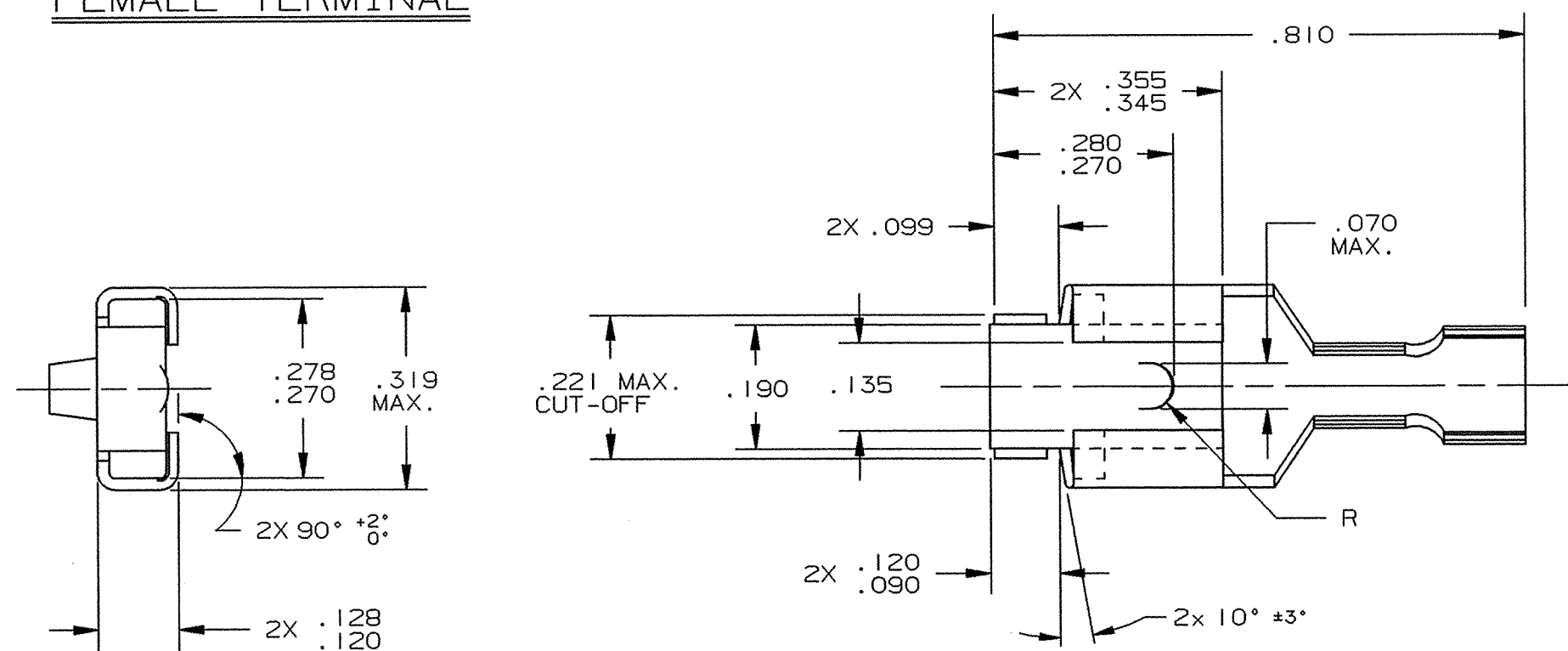


DEPT	1
1	
2	
3	
4	
5	
6	
7	
8	
9	
10	
11	8
12	
NC	
JZ	

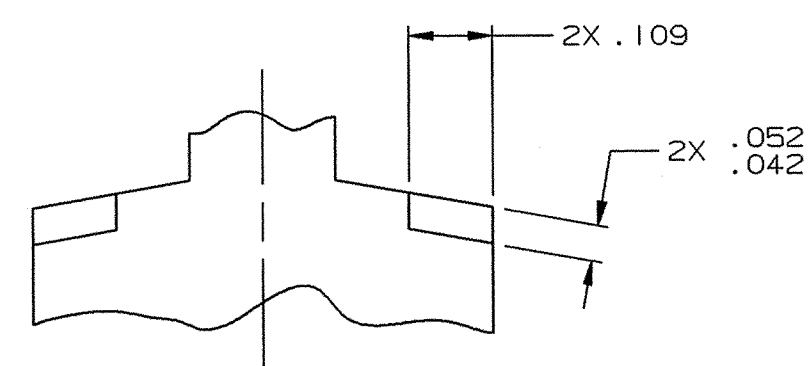
PART NAME: FEMALE TERMINAL

PART NO: 3000H 83A/-4

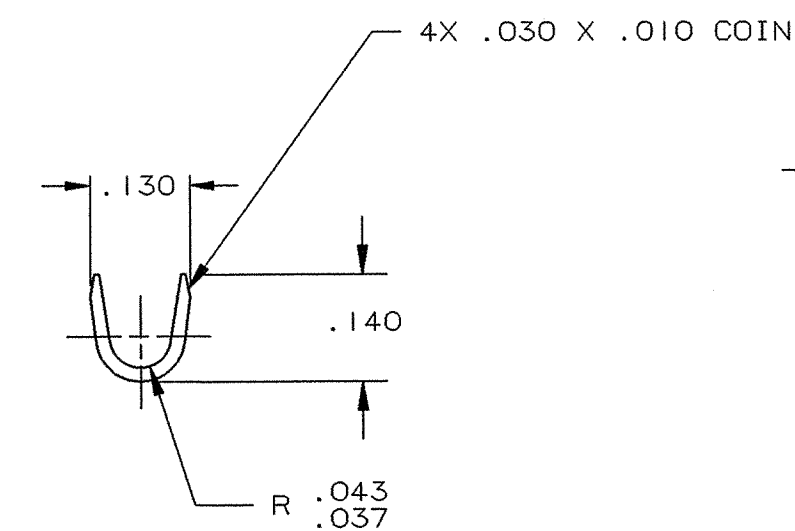
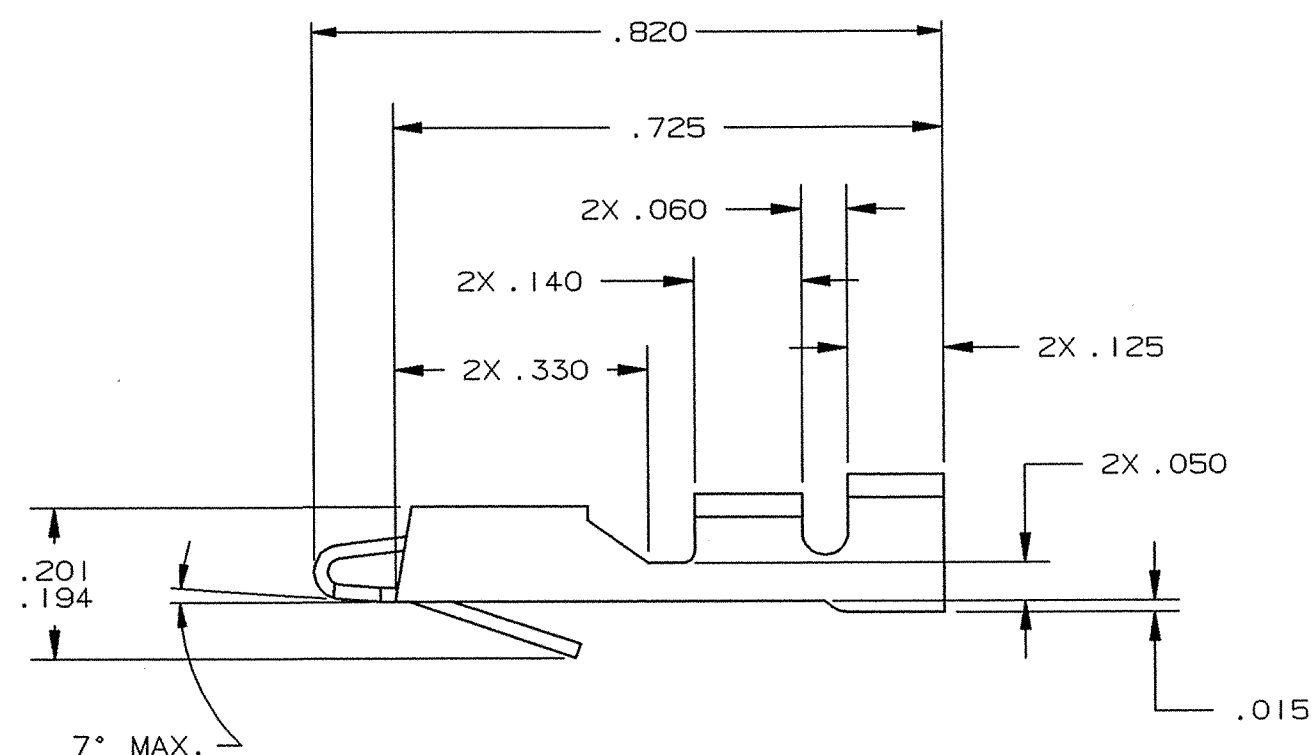
PART NO.	MATERIAL	FINISH
3000H 83A-4	.018 ±.001 THICK BRASS, C26000, R15T 84-87 PRETINNED PCS 1007	SEE MATERIAL
3000H 83AB-4	.018 ±.001 THICK BRASS, C26000, R15T 84-87	NONE



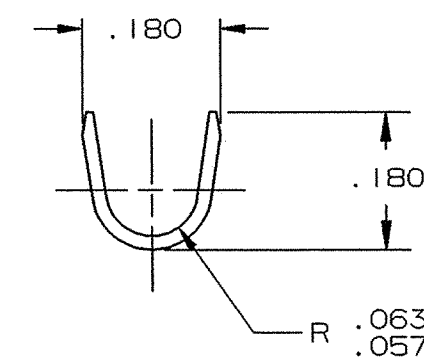
- NOTES:
1. TO ACCEPT A .250 X .032 MALE TAB.
 2. TO ACCOMMODATE #16 - #20 GAUGE WIRE.
 3. INSULATION DIAMETER RANGE: .075 - .125.
 4. RECOMMENDED STRIP LENGTH: 3/16 ±1/32.
 5. TONGUE TO BE FORMED TO ACHIEVE AN ENGAGING FORCE OF 5 TO 10 LBS. AND A DISENGAGING FORCE OF 6 TO 12 LBS. USE 3000M 716 OR 3000M 742A/ MALE TABS FOR TESTING.
 6. USE EDGE OF CARRIER STRIP AS DATUM LINE FOR DIMENSIONS.
 7. FOR PARTS LESS DIMPLE, ADD SUFFIX -3 TO PART NUMBER. (I.E. 3000H 83A-4-3)
 8. UNLESS OTHERWISE SPECIFIED, ALL RADII TO BE .015.
 9. FOR PARTS WITH PAPER INTERLEAVING, ADD SUFFIX "K" TO PART NUMBER. (I.E. 3000H 83A-4K)



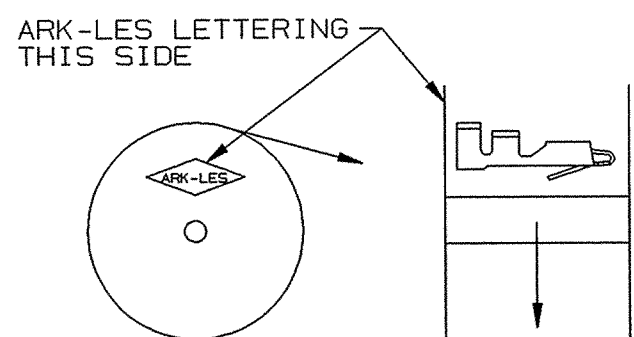
FLAT BLANK OF RECEPTACLE



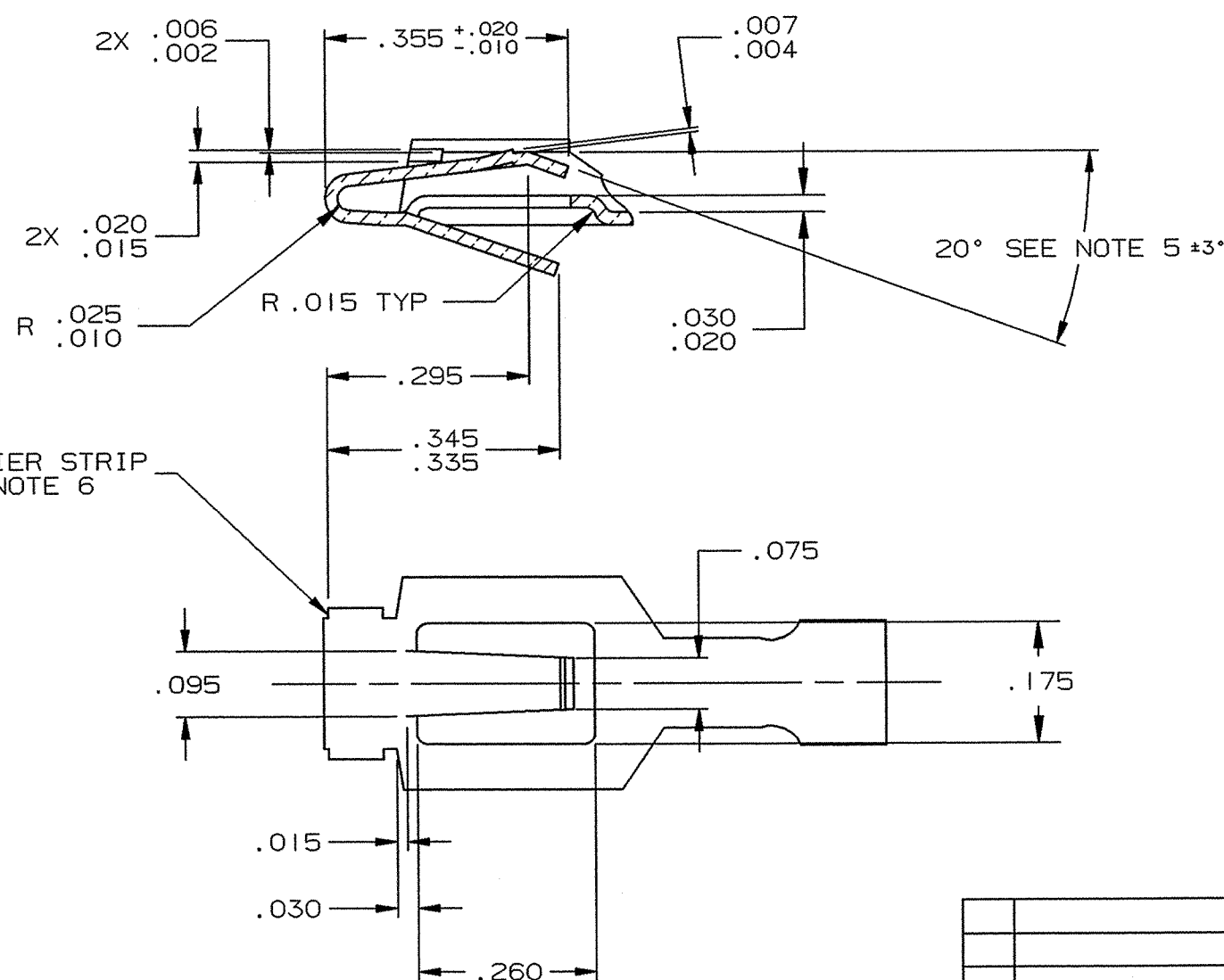
WIRE GRIP



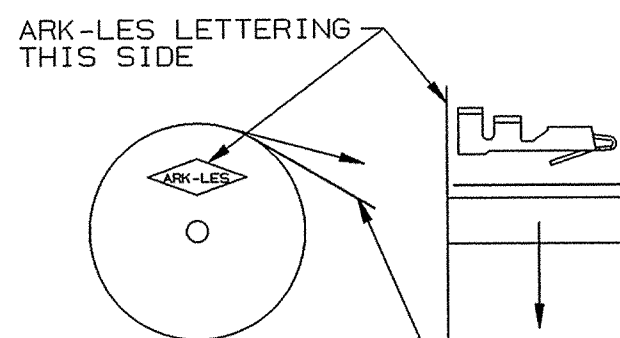
INSULATION GRIP



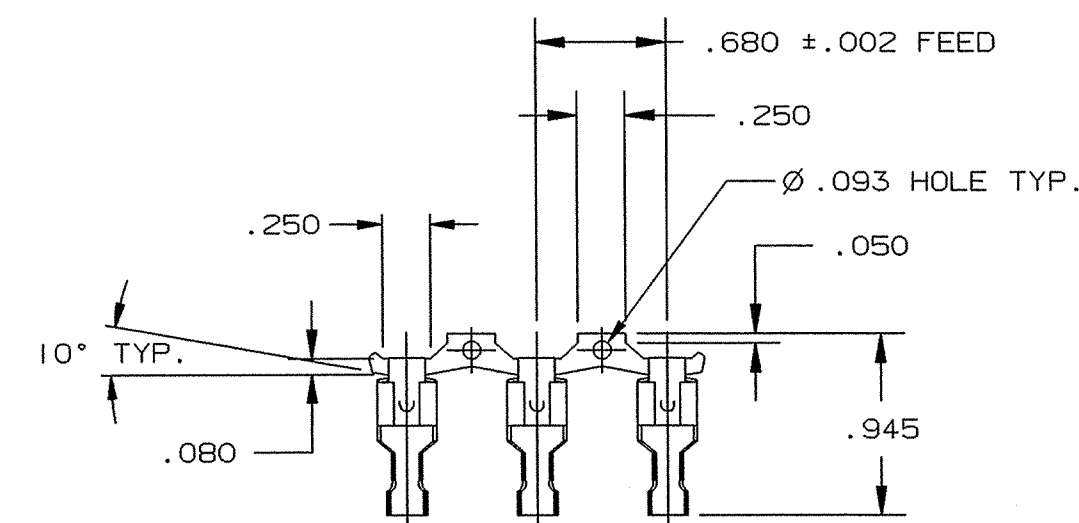
STANDARD REELING
(I.E. 3000H 83A-4)



CARRIER STRIP
SEE NOTE 6



STANDARD REELING
WITH PAPER INTERLEAVING
(I.E. 3000H 83A-4K)



FABRICATED TERMINAL STRIP

SCALE: FULL

ARK-LES UNCONTROLLED

PROD. REL.	SK 0872	10/1/81	RT	TOLERANCES UNLESS OTHERWISE SPECIFIED:
QUOTE REL.				DECIMALS ±.010 METRIC ±0.25mm ANGLES ±1°
DR:	R. TASTULA	8/27/01		MATERIAL: SEE TABLE
CHK'D:	R.W.T.	9-5-01		FINISH: SEE TABLE
APP:	B. S. [Signature]	9/18/01		PART NO: 3000H 83A/-4
H	REVISED & REDRAWN PER ECR #12211	8/27/01	RT	SUPERCEDES DWG. DATED: 9/22/81
REV.	DESCRIPTION	DATE	DR.	SCALE: 4:1 CAD NO: CT00015

ORIGINAL IF RED